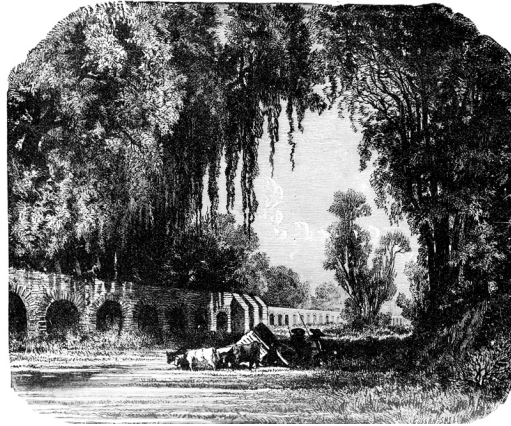


# AN APRIL DAY

BY HENRY WADSWORTH LONGFELLOW



When the warm sun, that brings  
Seed-time and harvest, has returned again,  
'T is sweet to visit the still wood, where springs  
The first flower of the plain.

I love the season well,  
When forest glades are teeming with bright forms,  
Nor dark and many-folded clouds foretell  
The coming-on of storms.

From the earth's loosened mould  
The sapling draws its sustenance, and thrives;  
Though stricken to the heart with winter's cold,  
The drooping tree revives.

The softly-warbled song  
Comes from the pleasant woods, and colored wings  
Glance quick in the bright sun, that moves along  
The forest openings.

When the bright sunset fills  
The silver woods with light, the green slope throws  
Its shadows in the hollows of the hills,  
And wide the upland glows.

And when the eve is born,  
In the blue lake the sky, o'er-reaching far,  
Is hollowed out and the moon dips her horn,  
And twinkles many a star.

Inverted in the tide  
Stand the gray rocks, and trembling shadows throw,  
And the fair trees look over, side by side,  
And see themselves below.

Sweet April! many a thought  
Is wedded unto thee, as hearts are wed;  
Nor shall they fail, till, to its autumn brought,  
Life's golden fruit is shed.