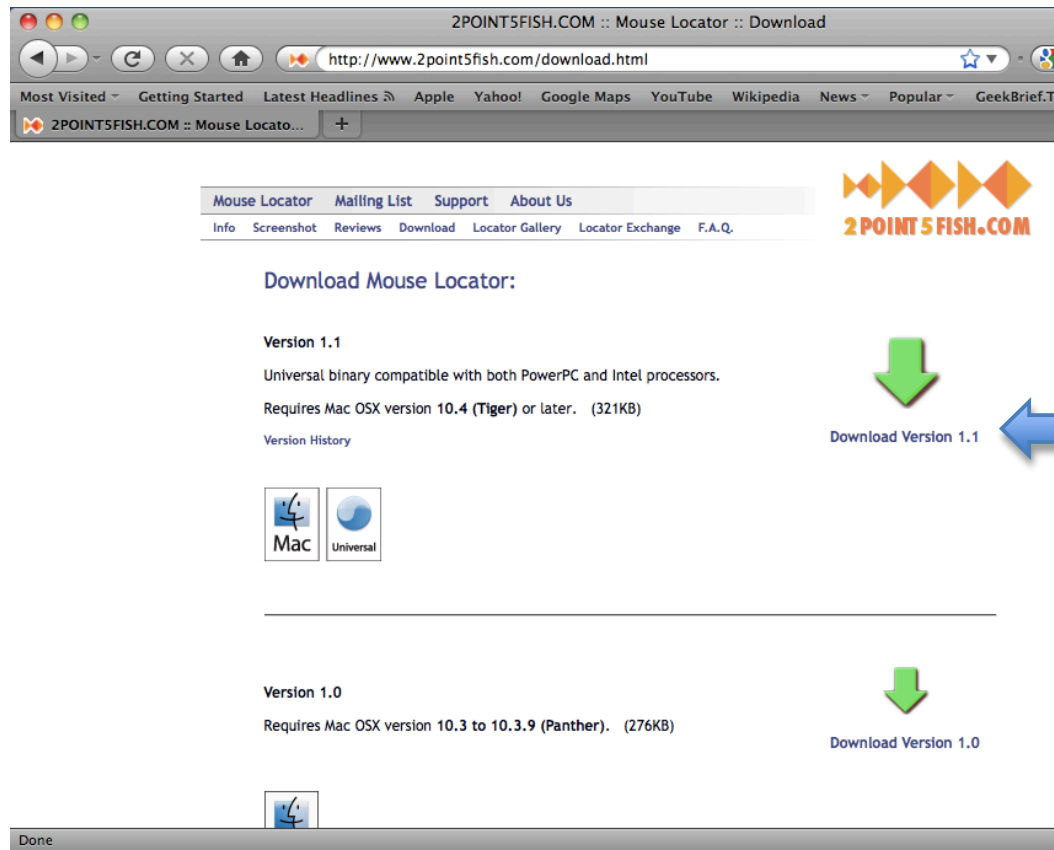


Tech Ease for All

Installing Mouse Locator

Mouse Locator is a free pointer enhancement that can make it easier to find the pointer on the screen if you have low vision. To install Mouse Locator:

1. Go to the Mouse Locator website at <http://www.2point5fish.com> and make sure you're on the Download page, then click on the Download link for the version of Mouse Locator that matches your operating system.



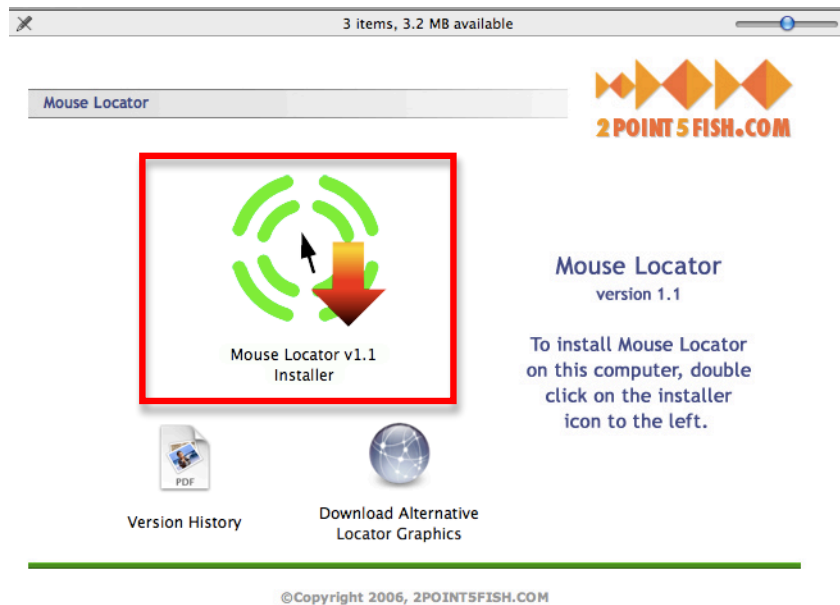
The screenshot shows a web browser window displaying the download page for Mouse Locator. The browser's address bar shows the URL <http://www.2point5fish.com/download.html>. The page features a navigation menu with links for Mouse Locator, Mailing List, Support, and About Us. Below the menu, there are links for Info, Screenshot, Reviews, Download, Locator Gallery, Locator Exchange, and F.A.Q. The main content area is titled "Download Mouse Locator:" and lists two versions: Version 1.1 and Version 1.0. Version 1.1 is described as a universal binary compatible with both PowerPC and Intel processors, requiring Mac OS X version 10.4 (Tiger) or later, and is 321KB. A green arrow points to the "Download Version 1.1" link, which is also highlighted by a blue arrow. Version 1.0 is described as requiring Mac OS X version 10.3 to 10.3.9 (Panther) and is 276KB. A green arrow points to the "Download Version 1.0" link. At the bottom of the page, there is a "Done" status bar.

2. Locate the disk image in your Downloads folder and double-click on it to open it.

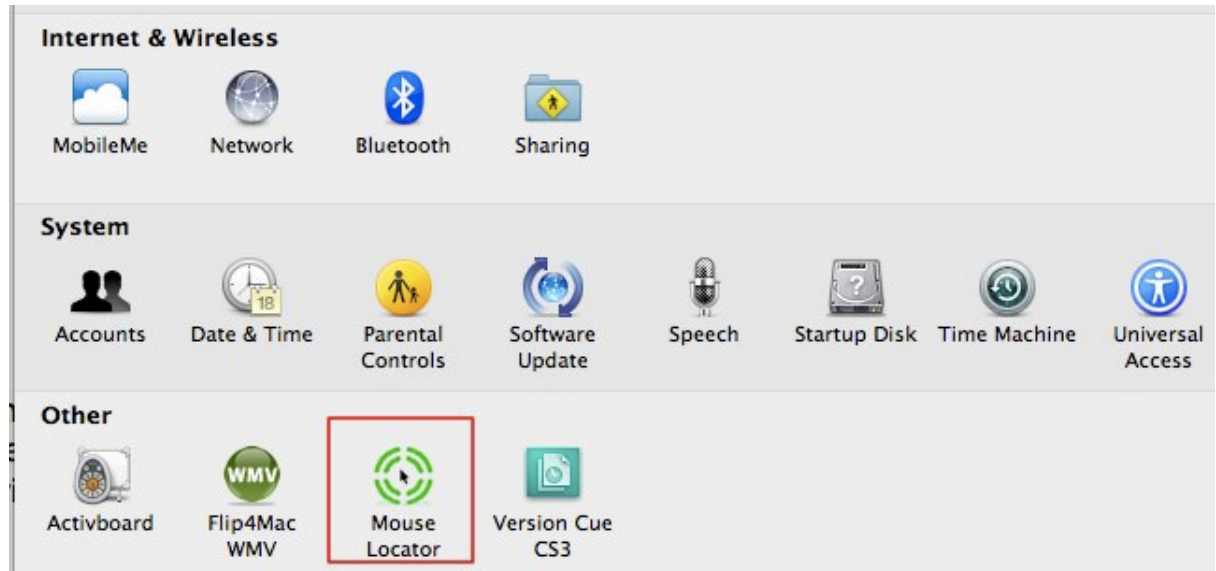


MouseLocator(2).dmg

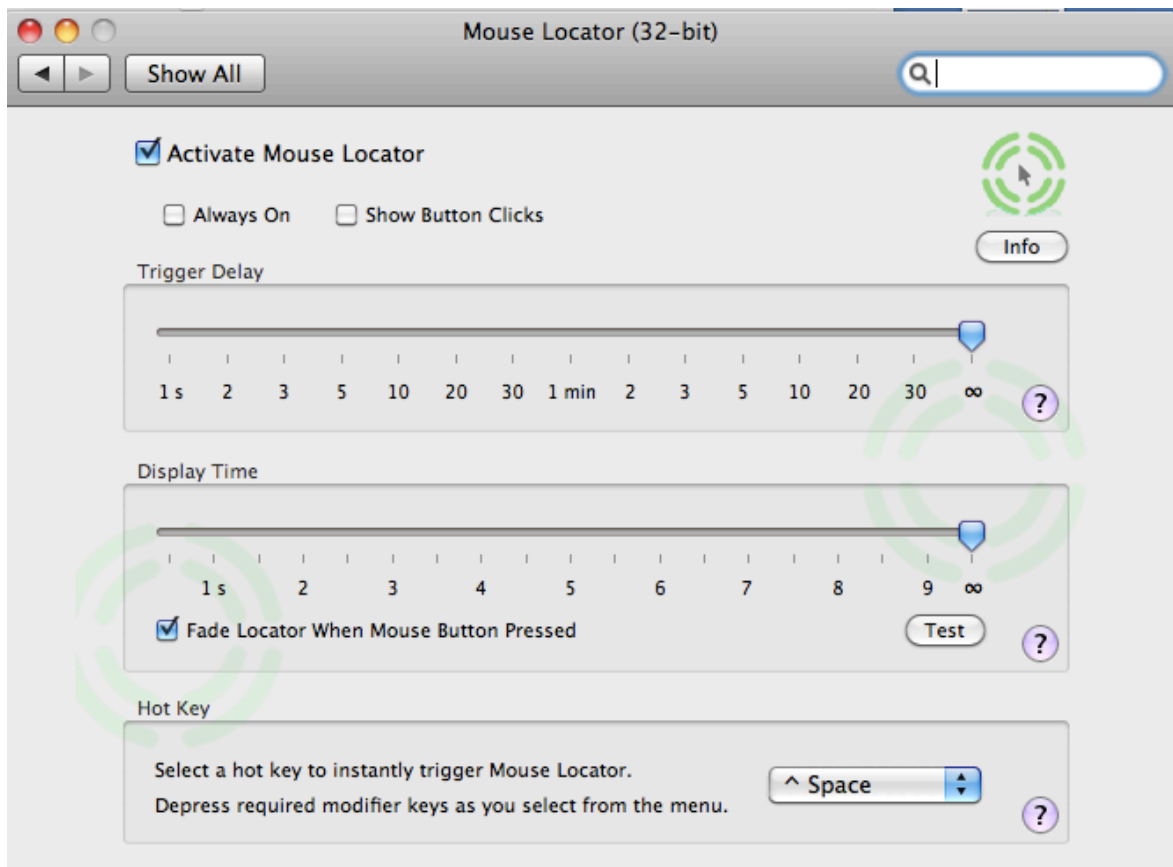
3. When the Disk Image opens, double-click on the Installer icon on the left side of the window to install Mouse Locator on your computer.



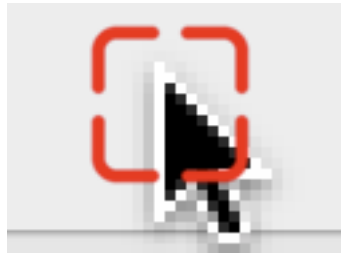
4. To adjust the settings for Mouse Locator, choose Apple, System Preferences, Mouse Locator.



The following options will be available in the Mouse Locator preferences:



- Always on: Mouse Locator is always visible.



- Show Button Clicks: Mouse Locator displays an animation when you click with your mouse.



- Trigger Delay: activates Mouse Locator when the mouse is moved after a period of inactivity. The slider sets the amount of time the mouse has to be inactive before Mouse Locator is activated. Setting it to infinity (on the right side of the slider) means that Mouse Locator is not activated after a period of inactivity.
- Display Time: determines how long to display Mouse Locator once it is activated after a period of inactivity. Setting the slider to infinity (on the right side of the slider) continues to display Mouse Locator until you click with your mouse or use the Hot Key.

- Hot Key: creates a keyboard shortcut to activate/deactivate Mouse Locator. To create the keyboard shortcut, select the menu and press the desired shortcut keys on your keyboard.

For additional tutorials, please visit our website at <http://etc.usf.edu/techease/4all/>

