

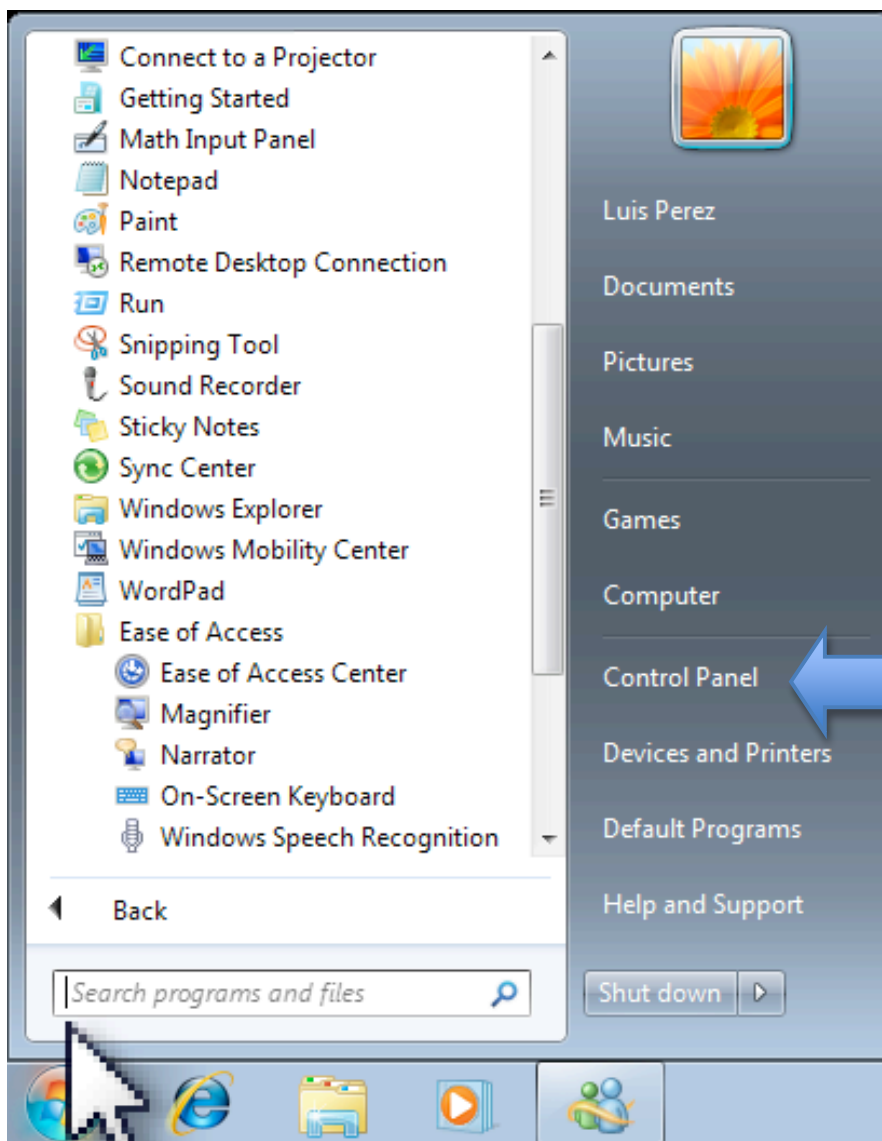
Tech Ease for All

Cursor Options in Windows 7

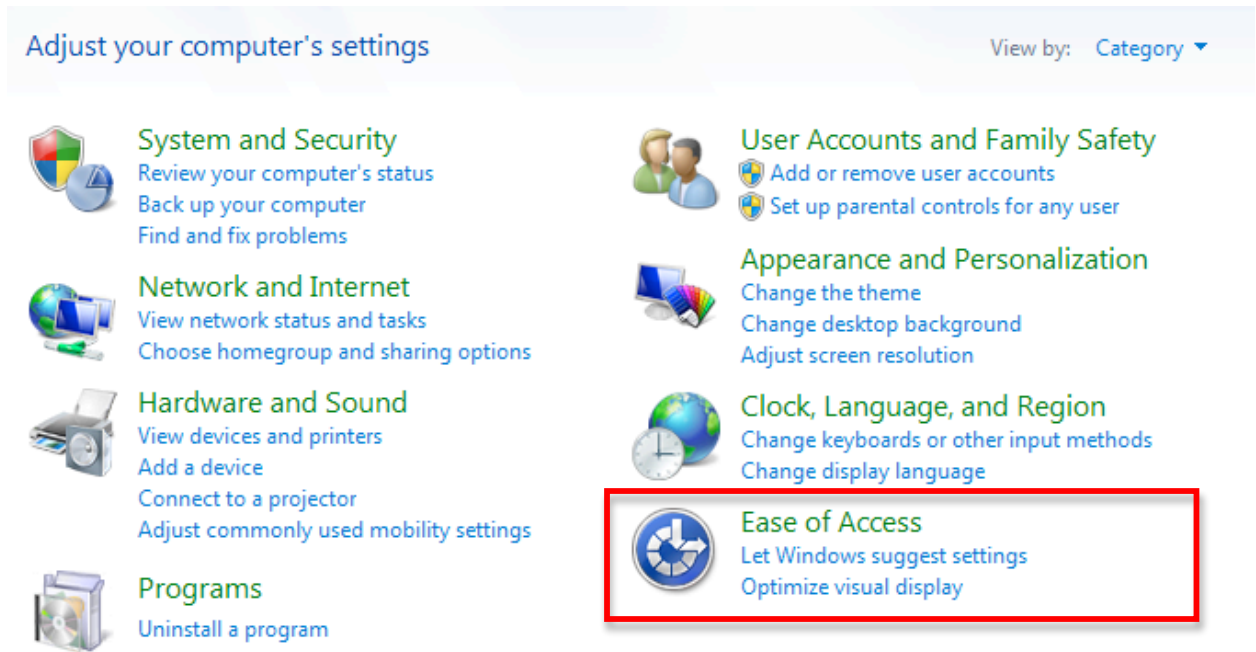
Windows 7 includes several options to make the cursor easier to locate on the screen if you have low vision.

To make the cursor easier to find in Windows 7:

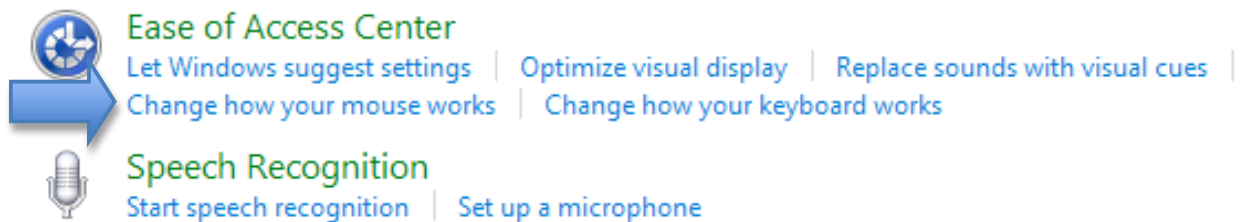
1. Choose Start, Control Panel.



2. In the Control Panel, choose Ease of Access.

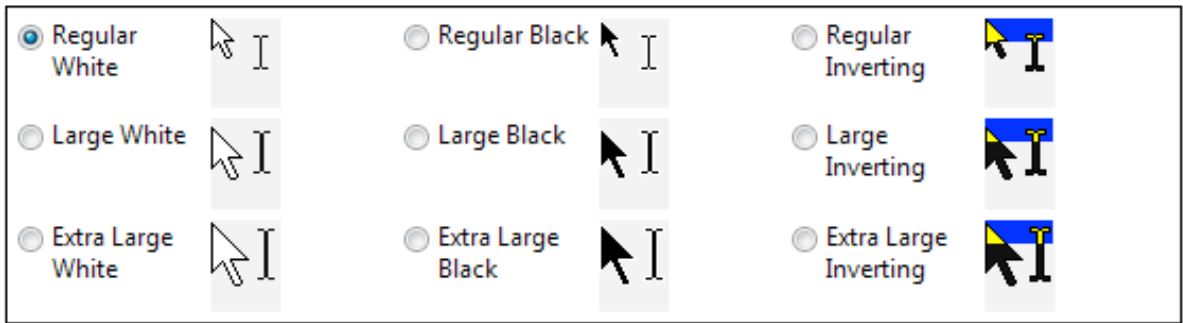


3. On the next screen, click on the link that says "Change how your mouse works."

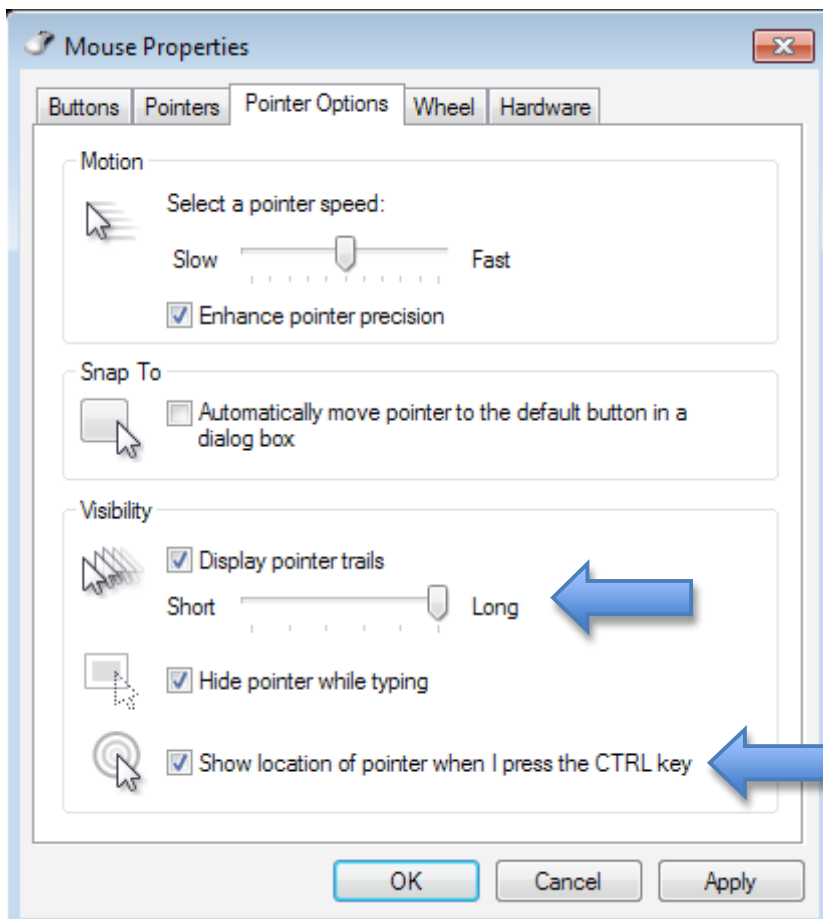


4. At the top of the next window, you will see options for changing both the size and color of your pointer.

Change the color and size of mouse pointers.



5. To access more cursor options, select the Mouse settings link at the bottom of the window.
6. The Pointer Options pane of the Mouse Properties window has options for adding a pointer trail and for playing an animation when you press the Control key on your keyboard. This animation can help you locate the pointer on the screen.



For additional tutorials, please visit our website at
<http://etc.usf.edu/techease/4all/>