

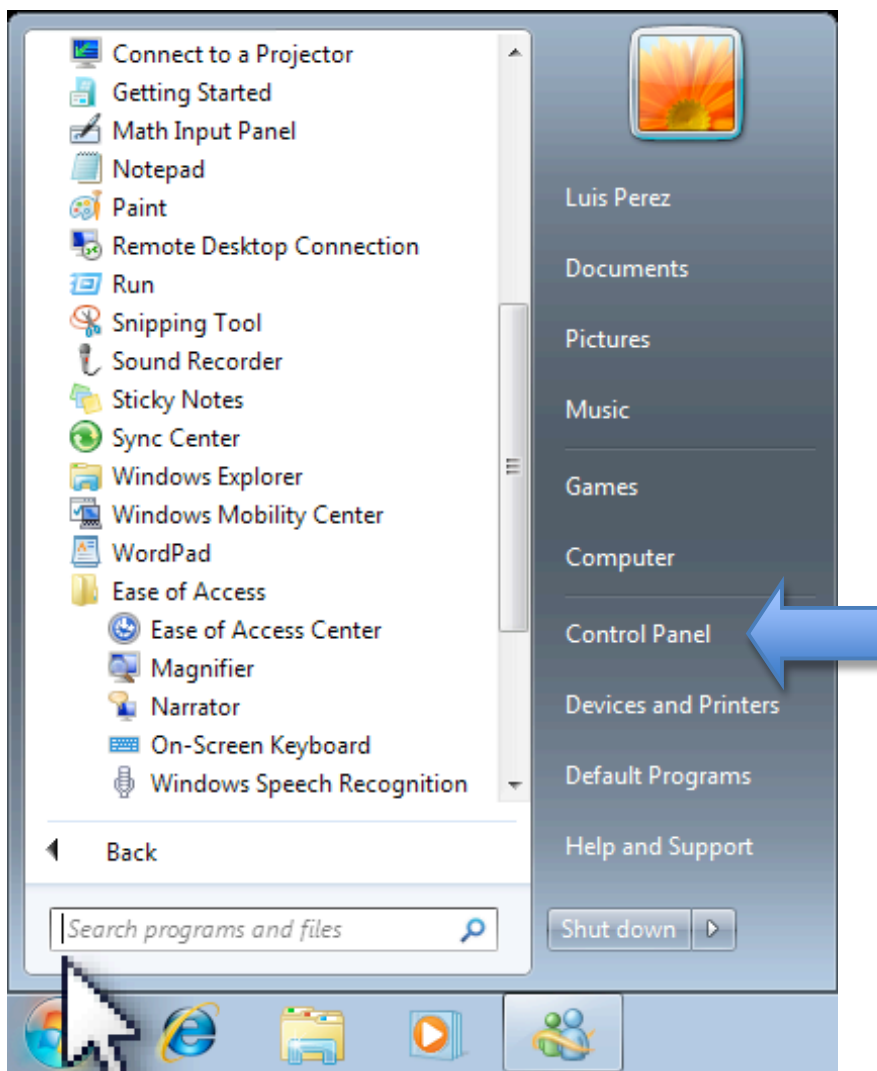
Tech Ease for All

Adjusting the Display Contrast in Windows 7

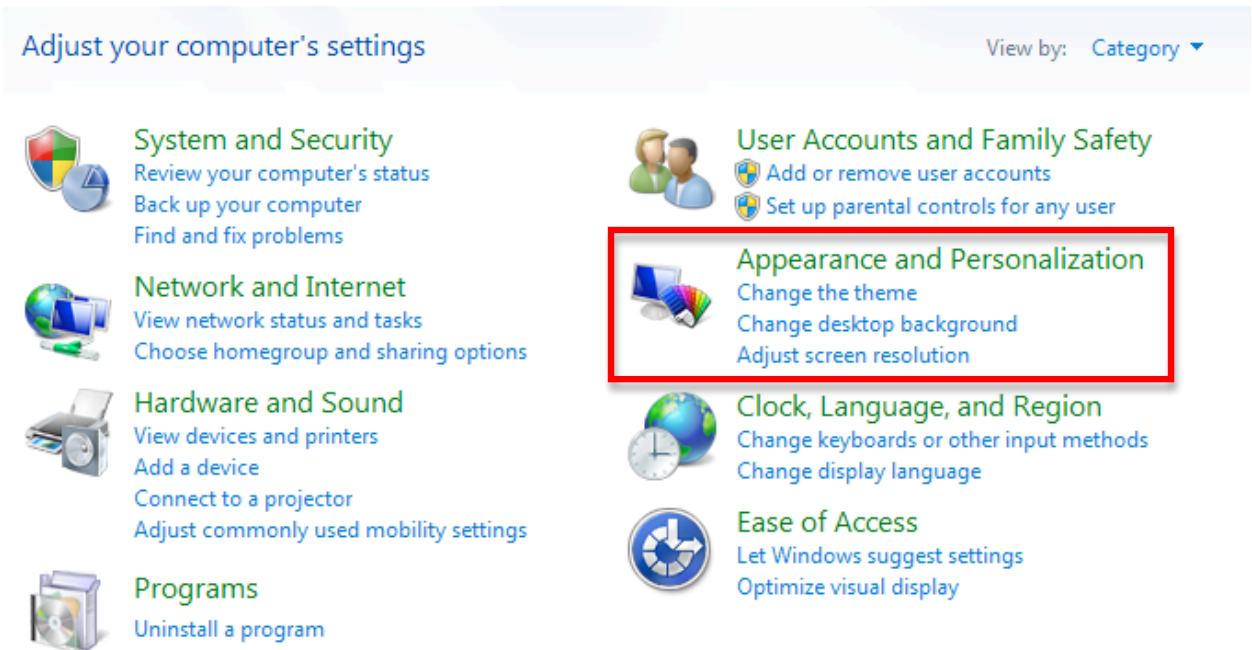
Windows 7 includes several themes that can be used to customize the display with matching icons and backgrounds. Several of these themes are high contrast for low vision users.

To choose a high contrast display in Windows 7:

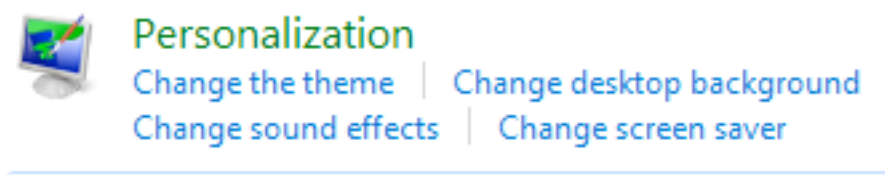
1. Choose Start, Control Panel.



2. In the Control Panel, choose Appearance and Personalization.



3. On the next screen, click on the link that says “Change the theme” (under Personalization).



4. Scroll down and select a theme in the Basic and High Contrast category.

To change back to the normal view for Windows 7, select one of the Aero or Basic themes in the Personalization window.

For additional tutorials, please visit our website at <http://etc.usf.edu/techease/4all/>